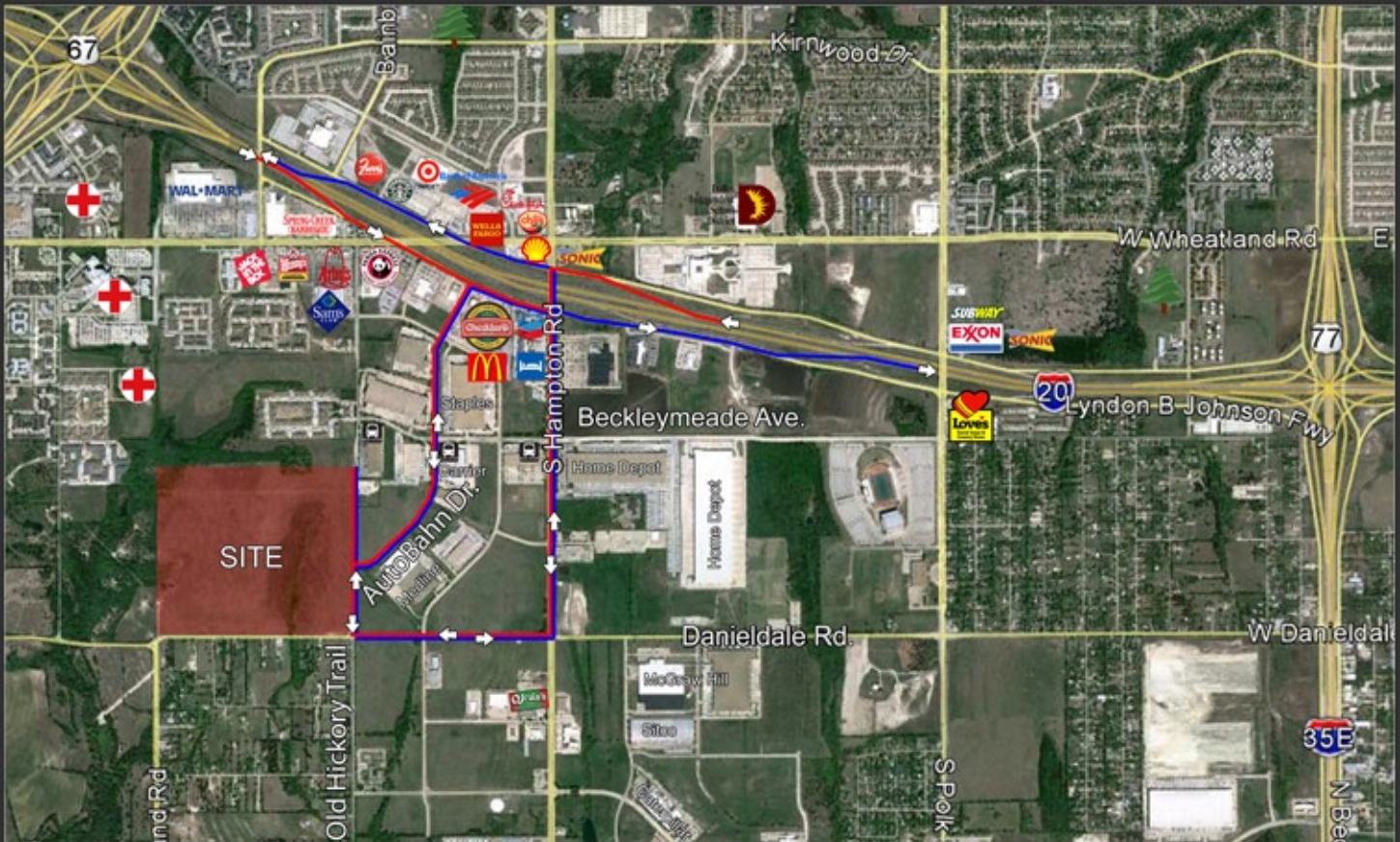


SOUTHFIELD PARK 35



USAA Real Estate Company

157 Acres
200,000 - 1,500,000 sf
Desoto/Dallas · Texas



Location Features

- Improved road infrastructure with Old Hickory widening & Danieldale improvements
- Direct access to I-20 & I-35
- Established industrial location with proximity to restaurants & other amenities
- Favorable property tax rates in relation to other south Dallas locations
- Multiple paths of ingress/egress from the site via improved concrete road systems

Project Features

- Fully entitled site; Flexible site plan
- Planned buildings ranging from 200,000sf to 1,500,000sf
- 24/7 Operation capability with no residential interference
- Street and utility infrastructure designed, approved, and funded
- Building pads under construction in 2nd Quarter 2013
- Ample trailer parking
- Balanced site with regional detention



SEEFRIED INDUSTRIAL PROPERTIES, INC.

3030 LBJ Freeway Suite: 1475
Dallas, Texas 75234

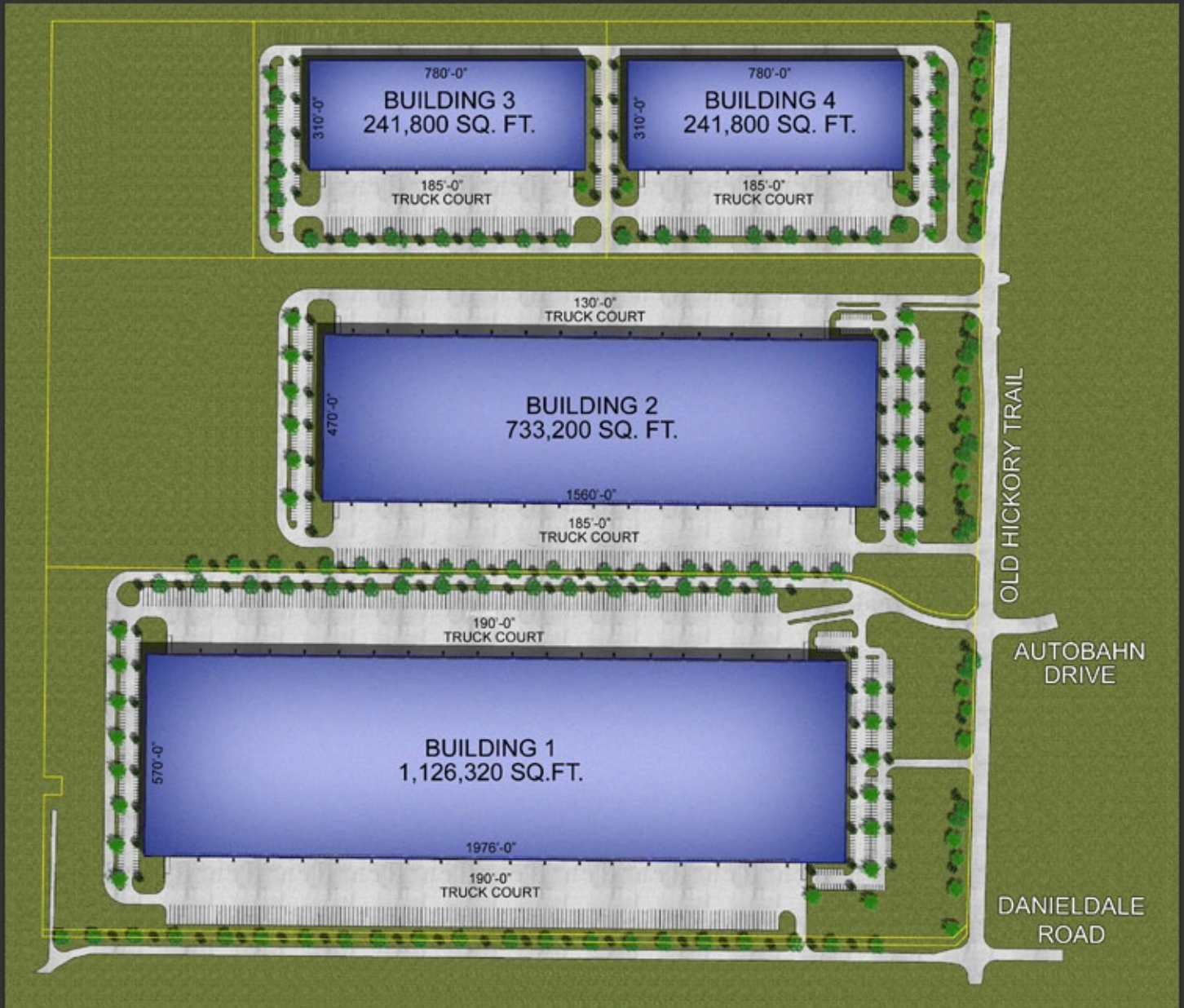
(214) 393-6060 tel, (214) 393-6070 fax
<http://www.seefriedproperties.com>

SOUTHFIELD PARK 35



USAA Real Estate Company

157 Acres
200,000 - 1,500,000 sf
Desoto/Dallas · Texas



For more information contact:

Jonathan Stites
(214) 393-6066
(214) 415-7103 (cell)
jstites@seefriedproperties.com



3030 LBJ Freeway Suite: 1475
Dallas, Texas 75234
Phone (214) 393-6060
Fax (214) 393-6070
www.seefriedproperties.com