

FOR LEASE

SOUTHFIELD INDUSTRIAL CENTER 5673 OLD DIXIE HIGHWAY, SUITE 106 8,268 SF AVAILABLE FOR LEASE



BUILDING HIGHLIGHTS

- Total Building: 34,288 SF
- Available: 8,268 SF
- Office: 3,608 SF
- 18' Clear Height
- 40'x40' Column Spacing
- 115'9" Building Depth
- Three (3) Dock Doors
- One (1) Ramped Drivein Door
- Sprinklered Building
- 14 Auto Parking Spots

Owned by

INDUSTRIAL
PROPERTY TRUST®



industrialpropertytrust.com

Leased by



SEEFRIED
INDUSTRIAL PROPERTIES

Doug Smith

678.904.1919 Direct

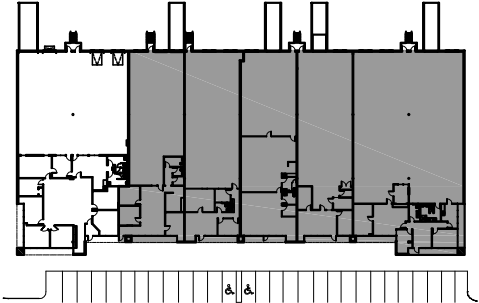
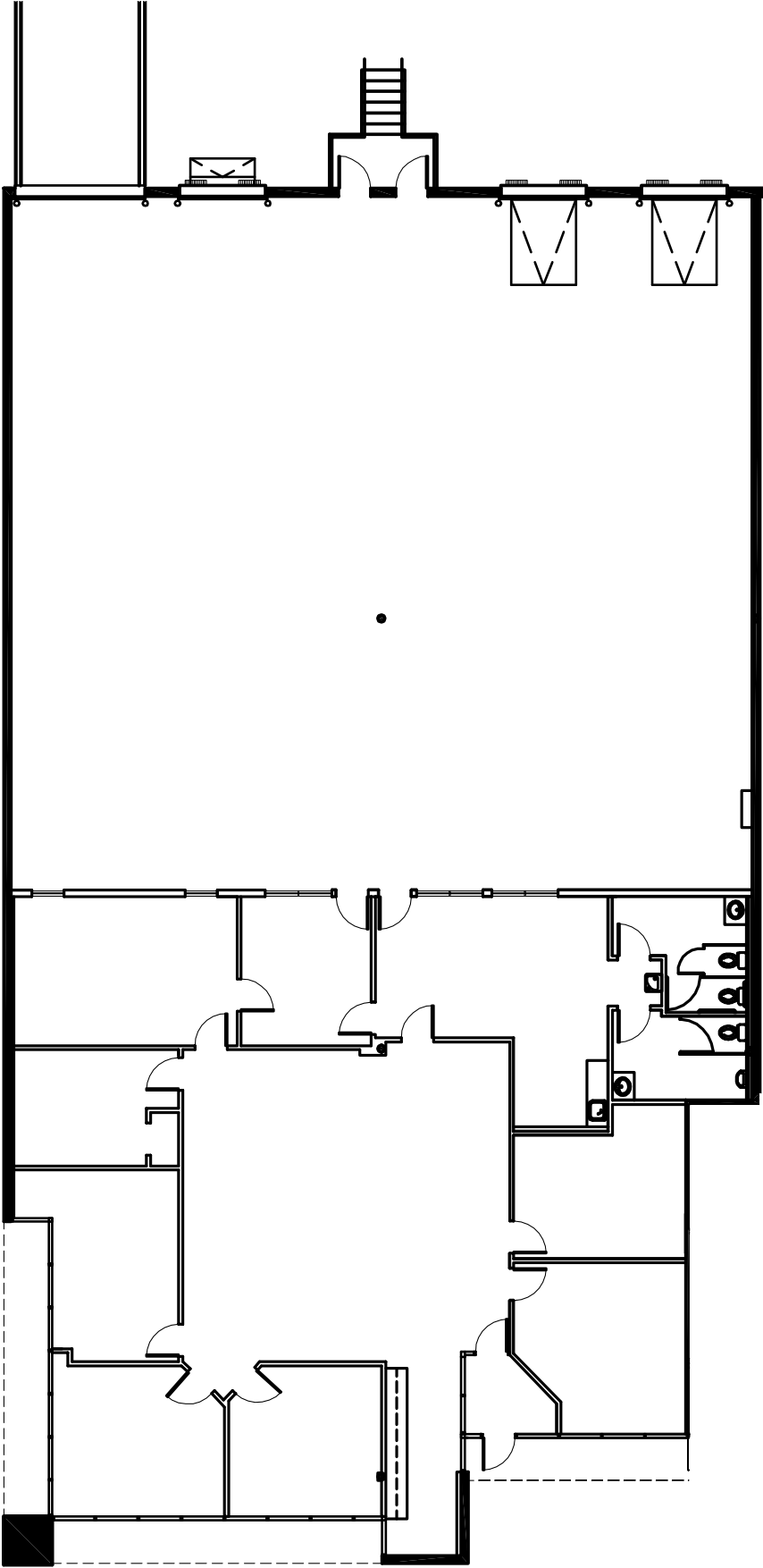
dougs@seefriedproperties.com

Joseph Kriss

678.904.1910

josephk@seefriedproperties.com

SOUTHFIELD INDUSTRIAL CENTER I 5673 OLD DIXIE HIGHWAY, SUITE 106
8,268 SF AVAILABLE FOR LEASE



No guarantee, warranty or representation, express or implied, is made as to the accuracy of the information contained herein, and same is submitted subject to errors, omissions, change of price, rental or other conditions, or withdrawal without notice.