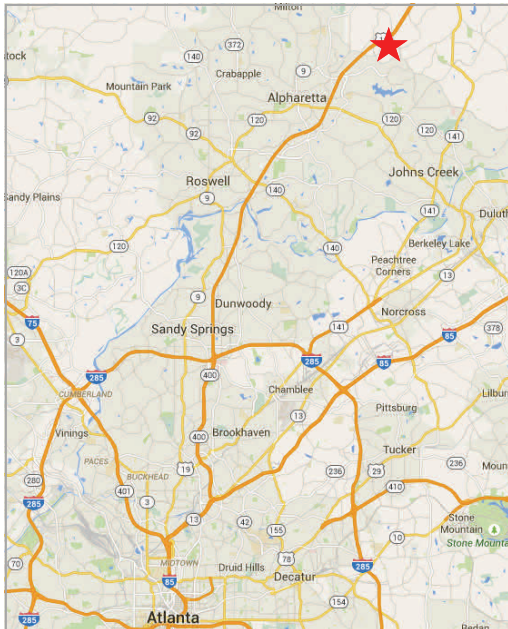
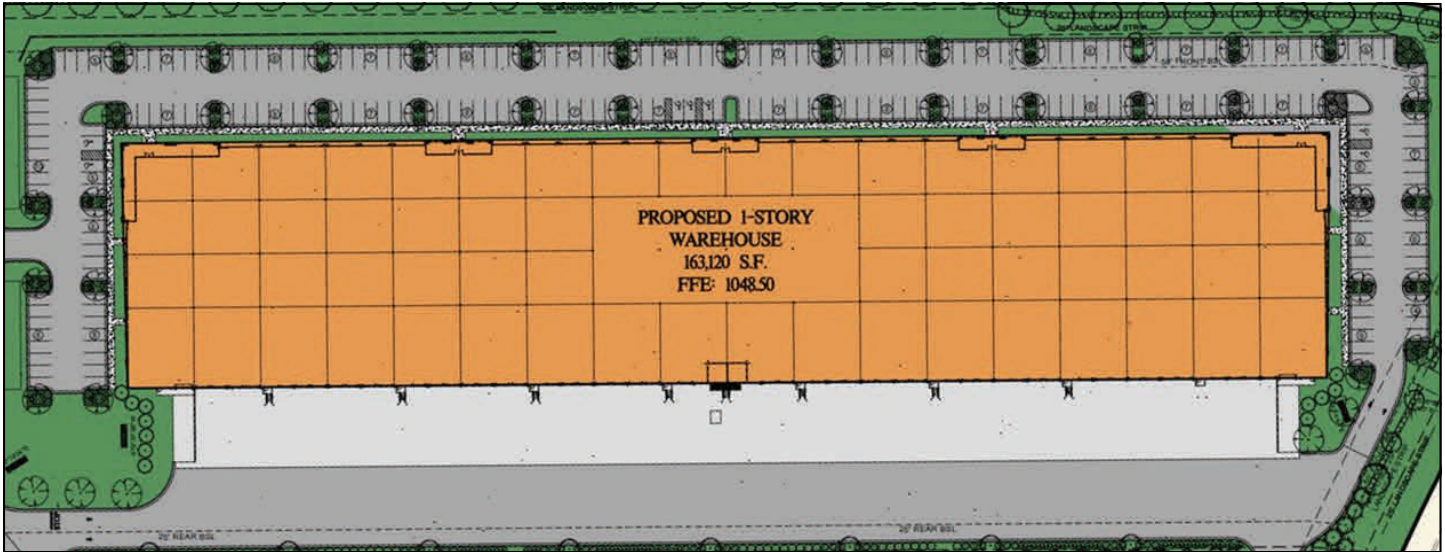


FOR LEASE

Bluegrass Valley II—McFarland Parkway

Up to 99,615 SF Available



Building Highlights

- ◆ Total Building: 163,120 SF
- ◆ Avail. 18,055—99,615 SF
- ◆ Office: BTS
- ◆ 30' Clear Height
- ◆ 40' x 50' Column Spacing
- ◆ 1.6/1,000 parking
- ◆ Great Access to GA-400
- ◆ 32 Dock High; 1 Drive-in
- ◆ Tremendous Visibility
- ◆ ESFR Sprinklers
- ◆ 120' Deep Truck Court
- ◆ Delivered: 2015—4th Quarter
- ◆ 180' Building Depth
- ◆ Forsyth County

Located at the intersection of McFarland Pkwy and McGinnis Ferry Rd

Developed/Leased by



SEEFRIED PROPERTIES, INC.

Doug Smith

(678) 904-1919

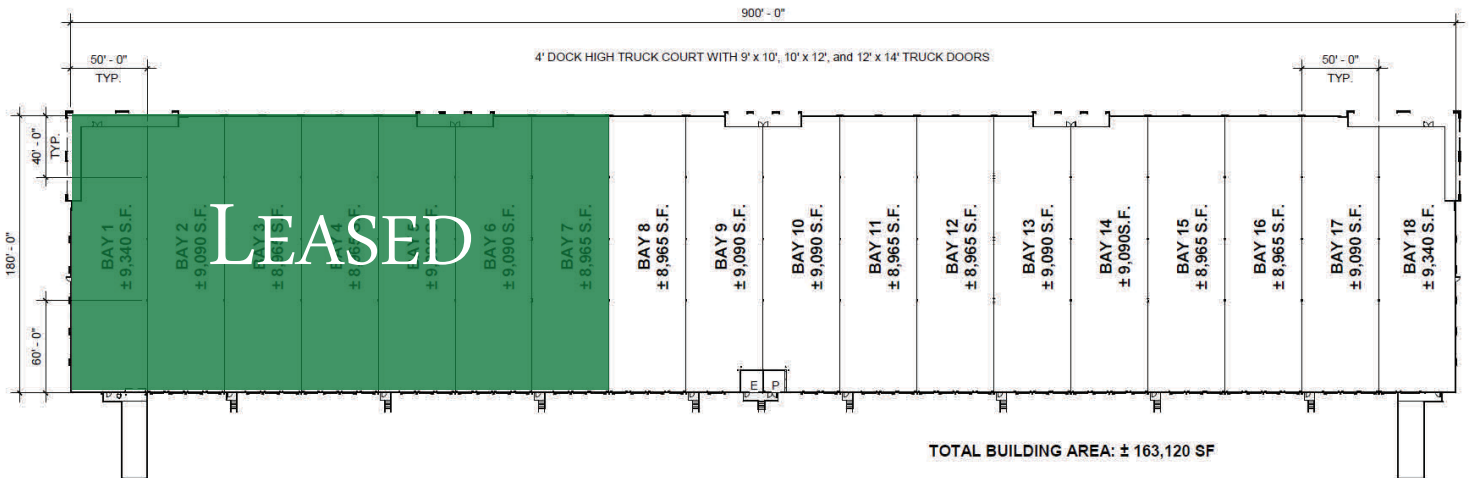
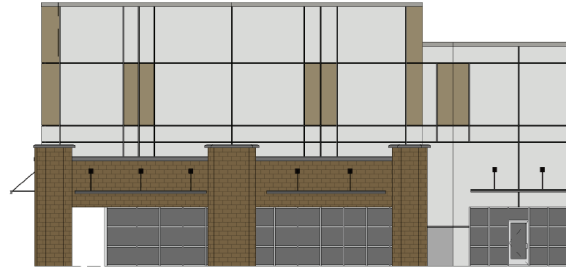
dougs@seefriedproperties.com

Joseph Kriss

(678) 904-1910

josephk@seefriedproperties.com

BLUEGRASS VALLEY II



Developed/Leased by



SEEFRIED PROPERTIES, INC.

Doug Smith

(678) 904-1919

dougs@seefriedproperties.com

Joseph Kriss

(678) 904-1910

josephk@seefriedproperties.com