

AVAILABLE FOR LEASE

Gwinnett Park

4357 Park Drive, Norcross, GA 30093 – Suite G

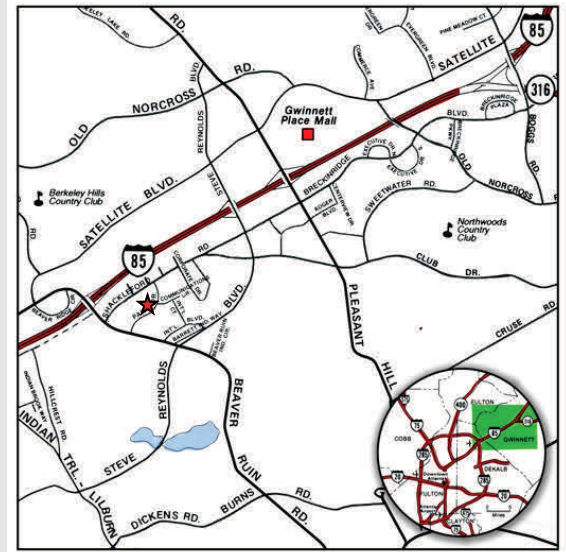


Building Specifications:

- Space Available: 6,400 SF
- Office: 4,000 SF – Approx.
- Ceiling Height: 20' Clear
- Dock Doors: 2 Dock Doors
- Sprinkler: Wet System
- Column Spacing: 40' x 30'

Large production room in place

*Excellent location with easy access to I-85 via
Beaver Ruin Road.*



OWNED BY:



LEASED & MANAGED BY:



SEEFRIED INDUSTRIAL PROPERTIES, INC.

Doug Smith
(678) 904-1919

dougs@seefriedproperties.com

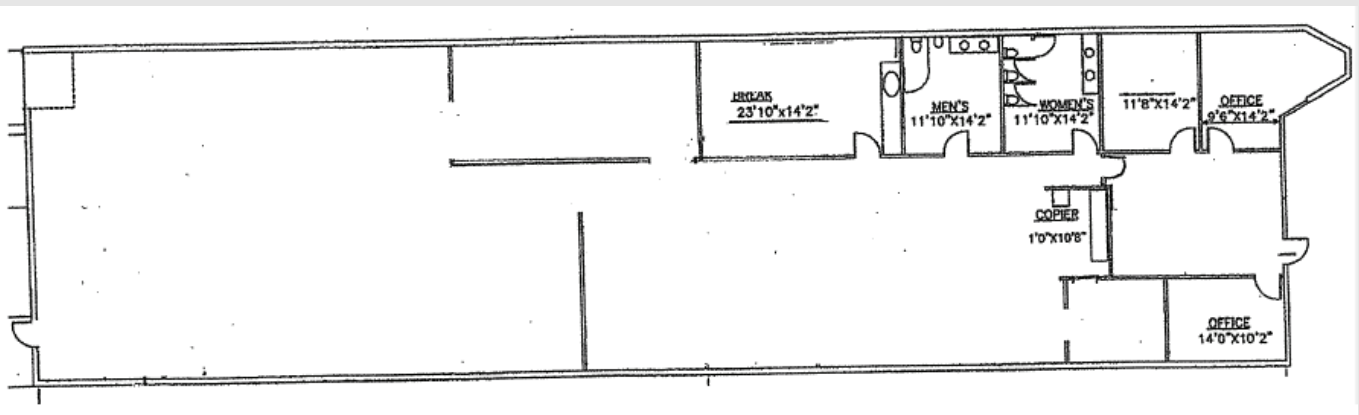
Joseph Kriss
(678) 904-1910

josephk@seefriedproperties.com

AVAILABLE FOR LEASE

Gwinnett Park

4357 Park Drive, Norcross, GA 30093 – Suite G



OWNED BY:



LEASED & MANAGED BY:



SEEFRIED INDUSTRIAL PROPERTIES, INC.

Doug Smith
(678) 904-1919

dougs@seefriedproperties.com

Joseph Kriss
(678) 904-1910

josephk@seefriedproperties.com