

AVAILABLE FOR LEASE

Roswell Distribution Center

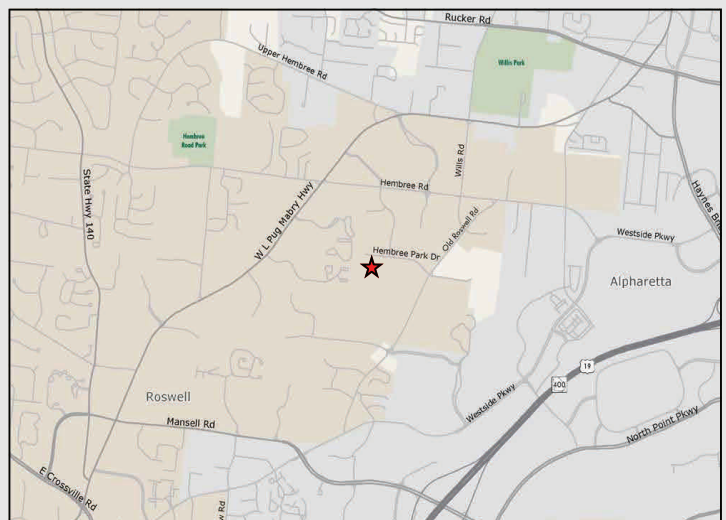
215 Hembree Park Drive, Suite 150/155, Roswell, GA



Building Specifications:

Space Available:	12,276 SF
Office Size:	Approx. 1,000 SF
Building Size:	82,704 SF
Ceiling Height:	20' Clear Average
Dock Doors:	5 Dock Doors
Drive-in Door:	1 Ramped Door
Sprinkler:	Wet System
Column Spacing:	50' x 40'

Excellent location with easy access to GA 400 and local amenities.



OWNED BY:



LEASED & MANAGED BY:



SEEFRIED INDUSTRIAL PROPERTIES, INC.

Doug Smith
(678) 904-1919

dougs@seefriedproperties.com

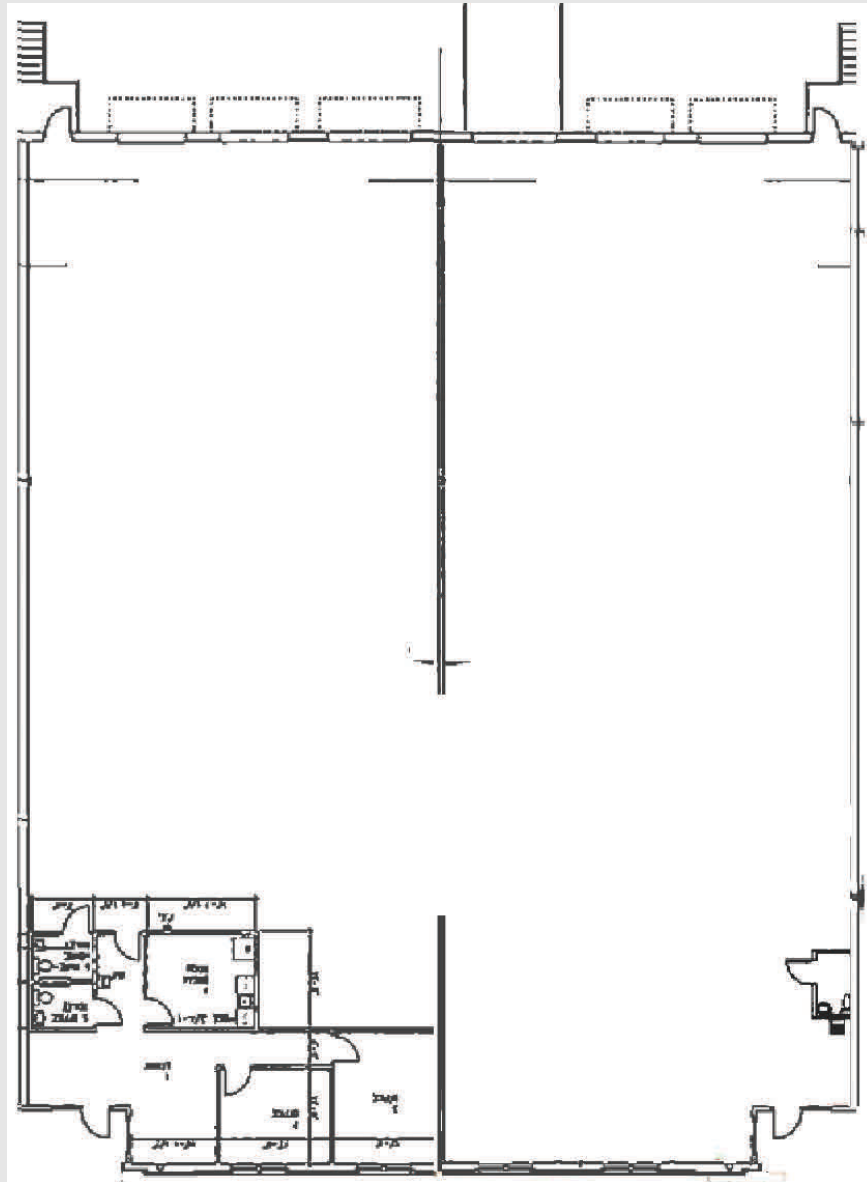
Joseph Kriss
(678) 904-1910

josephk@seefriedproperties.com

AVAILABLE FOR LEASE

Roswell Distribution Center

215 Hembree Park Drive, Suite 150/155, Roswell, GA



OWNED BY:



LEASED & MANAGED BY:



SEEFRIED INDUSTRIAL PROPERTIES, INC.

Doug Smith
(678) 904-1919

dougs@seefriedproperties.com

Joseph Kriss
(678) 904-1910

josephk@seefriedproperties.com