

AVAILABLE FOR LEASE

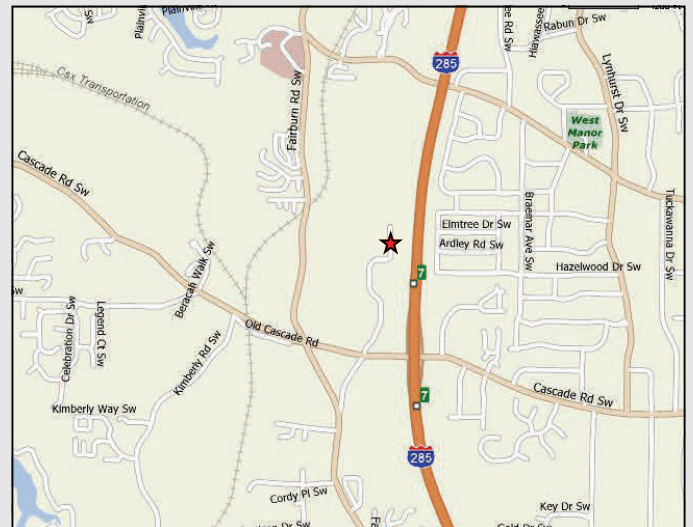
# Perimeter West

1035 Research Center Drive, Suite B, Atlanta, GA



## Building Specifications:

- Space Available:** 8,000 SF
- Office Size:** 3,490 SF
- Ceiling Height:** 20' Clear Average
- Dock Doors:** 1 Dock/1 Drive-in Doors
- Sprinkler:** Wet System
- Column Spacing:** 40' x 40'



*Excellent location with easy access to I-285 via Cascade Road.*

OWNED BY:



LEASED & MANAGED BY:



SEEFRIED INDUSTRIAL PROPERTIES, INC.

**Doug Smith**  
(678) 904-1919

dougs@seefriedproperties.com

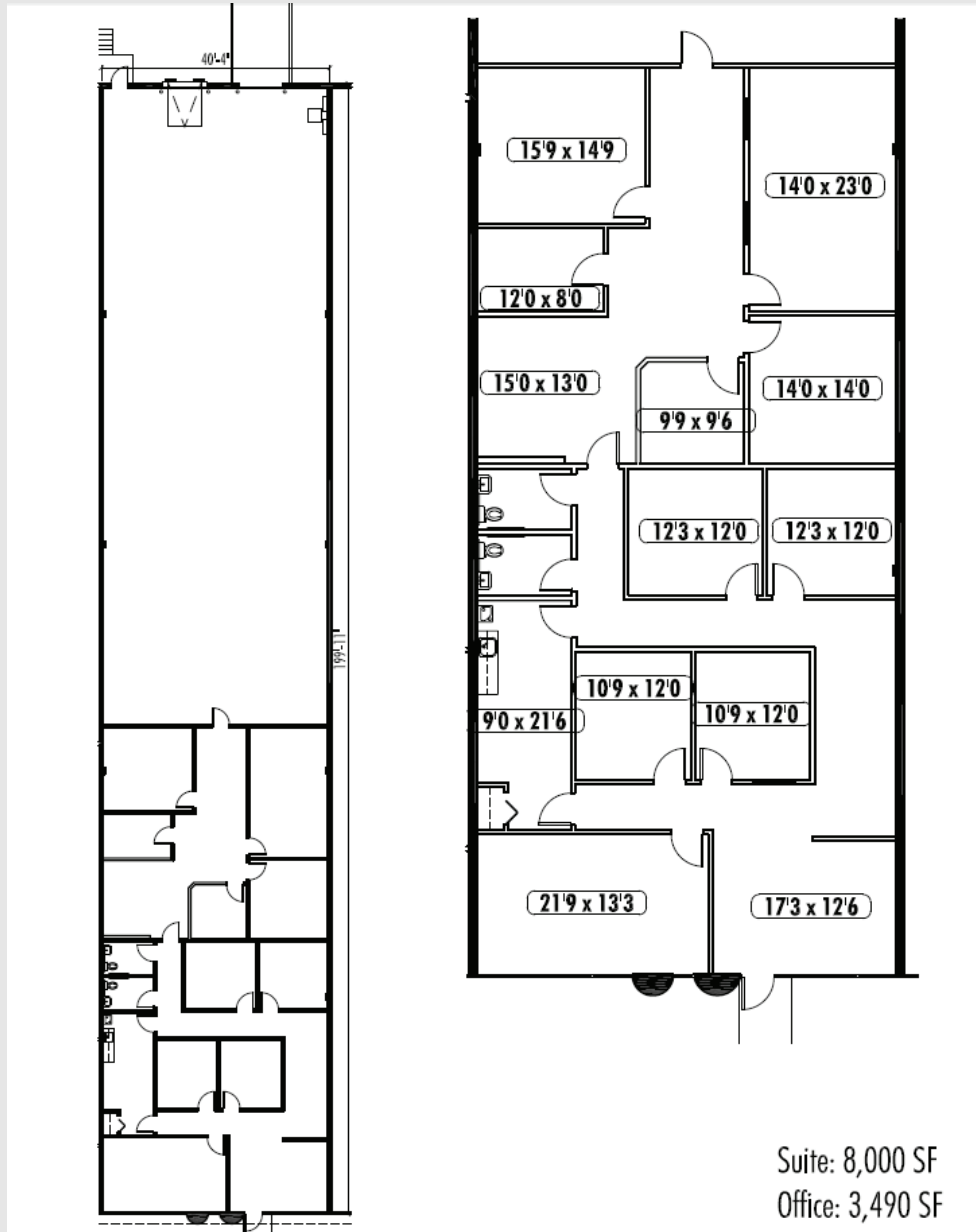
**Joseph Kriss**  
(678) 904-1910

josephk@seefriedproperties.com

AVAILABLE FOR LEASE

# Perimeter West

1035 Research Center Drive, Suite B, Atlanta, GA



OWNED BY:



LEASED & MANAGED BY:



SEEFRIED INDUSTRIAL PROPERTIES, INC.

**Doug Smith**  
(678) 904-1919

dougs@seefriedproperties.com

**Joseph Kriss**  
(678) 904-1910

josephk@seefriedproperties.com