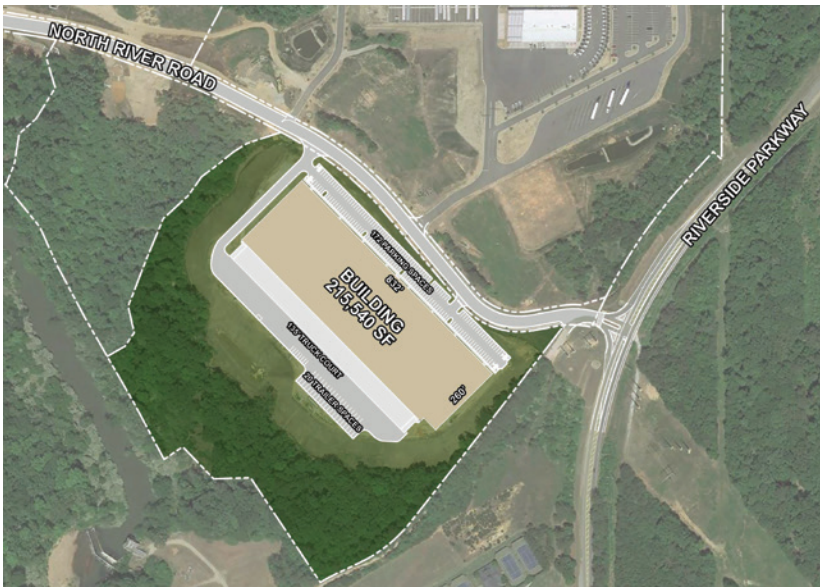


54,080 - 147,940 SF for Lease

Riverside West

1451 North River Road • Douglasville, GA



Distance to I-20: 4.8 miles
Distance to I-285: 9 miles
Distance to Downtown: 15 miles

Building Features

- » Total Building Size: 215,540 SF
- » 54,080 - 147,940 SF for lease
- » Total office: 2,500 SF
- » Rear-load configuration
- » Clear Height: 32' minimum
- » Construction: Tilt-up concrete, site-cast
- » Loading: 33 Docks; 1 Drive-in
- » Dock Equipment: BTS
- » Sprinkler: ESFR
- » Column Spacing: 52'x50'
- » Speed Bay: 60'
- » Lighting: T5 existing
- » Trailer Spaces: 21 (expandable)
- » Truck Court: 135'-185'



3333 Riverwood Parkway, Suite 200

Atlanta, GA 30339

404.233.0204

www.seefriedproperties.com

Doug Smith

678.904.1919 Direct

dougs@seefriedproperties.com

Joseph Kriss

678.904.1910 Direct

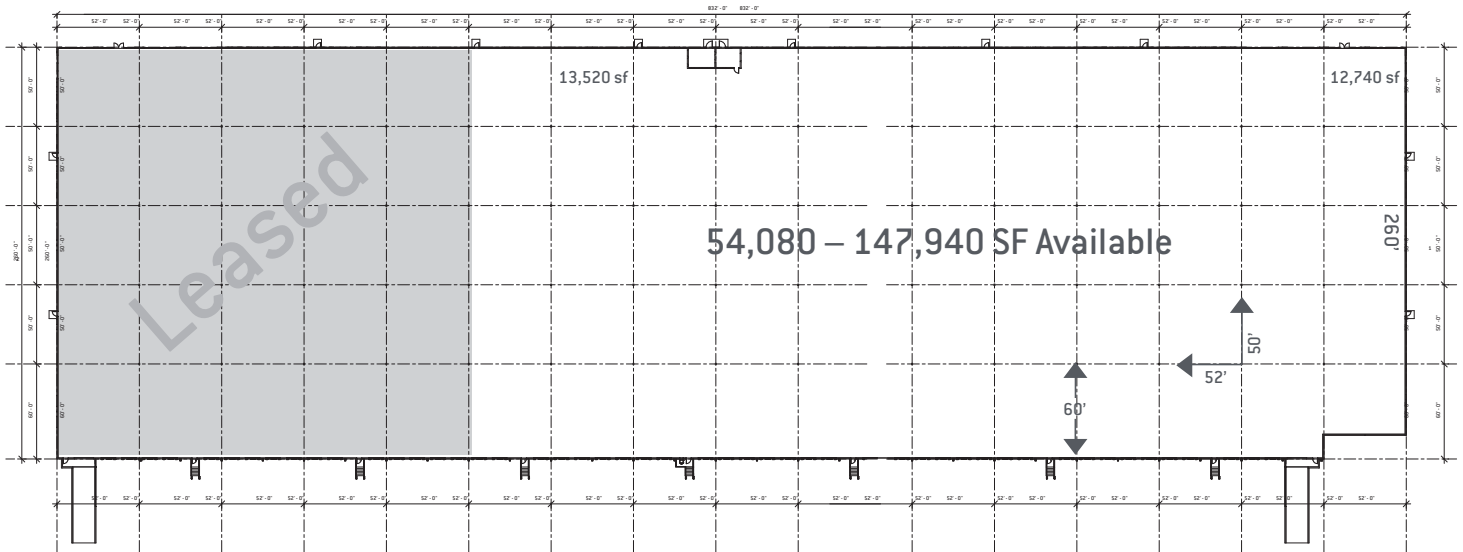
josephk@seefriedproperties.com

54,080 - 147,940 SF for Lease

Riverside West

1451 North River Road • Douglasville, GA

Site Plan



No guarantee, warranty or representation, express or implied, is made as to the accuracy of the information contained herein, and same is submitted subject to errors, omissions, change of price, rental or other conditions, or withdrawal without notice.



3333 Riverwood Parkway, Suite 200

Atlanta, GA 30339

404.233.0204

www.seefriedproperties.com

Doug Smith

678.904.1919 Direct

dougs@seefriedproperties.com

Joseph Kriss

678.904.1910 Direct

josephhk@seefriedproperties.com