

FOR LEASE

SOUTHFIELD INDUSTRIAL CENTER 5651 OLD DIXIE HIGHWAY, SUITE 102 8,480 SF AVAILABLE FOR LEASE



BUILDING HIGHLIGHTS

- Total Building: 34,288 SF
- Available: 8,480 SF
- Office: 3,138 SF
- 18' Clear Height
- 35'x40' Column Spacing
- 120' Building Depth
- Three (3) Dock Doors – One (1) pit leveler
- One (1) Ramped Drivein Door
- Sprinklered Building
- T5 Warehouse Lights

Owned by
INDUSTRIAL
PROPERTY TRUST®



industrialpropertytrust.com

Leased by

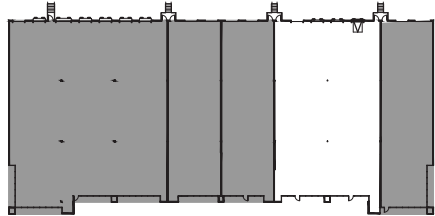
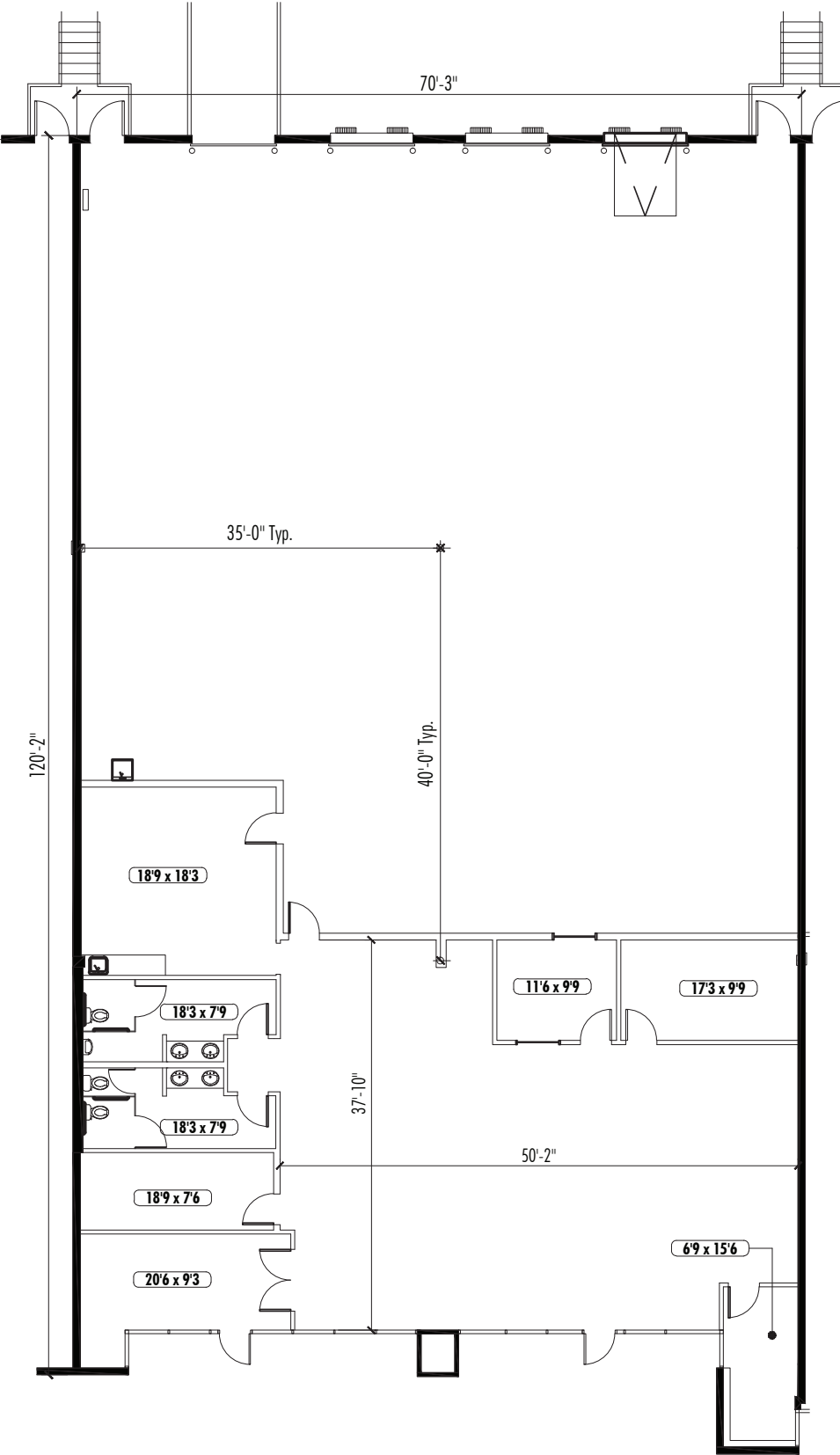


SEEFRIED
INDUSTRIAL PROPERTIES

Doug Smith
678.904.1919 Direct
dougs@seefriedproperties.com

Joseph Kriss
678.904.1910
josephk@seefriedproperties.com

SOUTHFIELD INDUSTRIAL CENTER | 5651 OLD DIXIE HIGHWAY, SUITE 102
8,480 SF AVAILABLE FOR LEASE



KEY PLAN

No guarantee, warranty or representation, express or implied, is made as to the accuracy of the information contained herein, and same is submitted subject to errors, omissions, change of price, rental or other conditions, or withdrawal without notice.