

FOR LEASE

SOUTHFIELD INDUSTRIAL CENTER 277 SOUTHFIELD PARKWAY, SUITE 120 3,233 SF AVAILABLE FOR LEASE



BUILDING HIGHLIGHTS

- Total Building: 49,216 SF
- Available: 3,233 SF
- Office: 1,489 SF
- 18' Clear Height
- 33'7" x 30' Column Spacing
- 96' Building Depth
- One (1) Dock Doors – One (1) EOD Leveler
- Sprinklered Building
- T5 Warehouse Lights

Owned by

INDUSTRIAL
PROPERTY TRUST®



industrialpropertytrust.com

Leased by



Doug Smith

678.904.1919 Direct

dougs@seefriedproperties.com

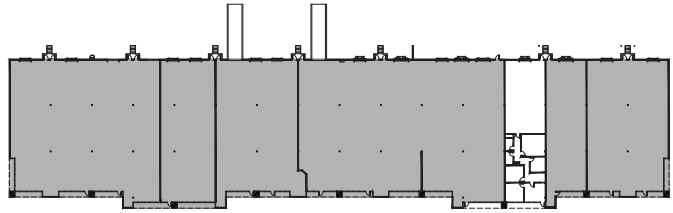
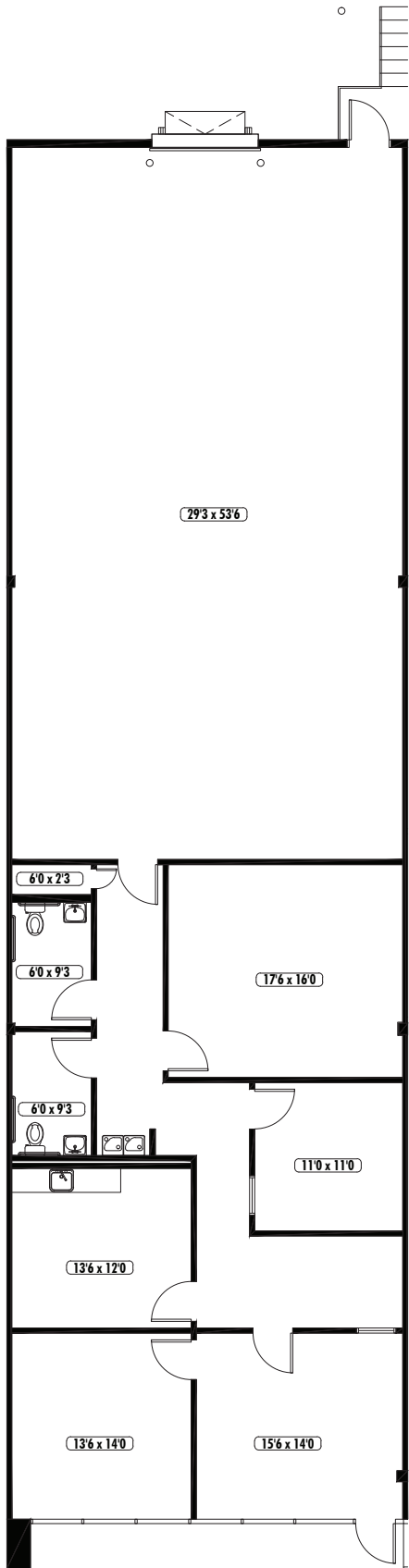
Joseph Kriss

678.904.1910

josephk@seefriedproperties.com

SOUTHFIELD INDUSTRIAL CENTER I 277 SOUTHFIELD PARKWAY, SUITE 120

3,233 SF AVAILABLE FOR LEASE



KEY PLAN