

FOR LEASE

SOUTHFIELD INDUSTRIAL CENTER 114 SOUTHFIELD PARKWAY, SUITE 120 4,320 SF AVAILABLE FOR LEASE



BUILDING HIGHLIGHTS

- Total Building: 60,264 SF
- Available: 4,320 SF
- Office: 2,688 SF
- 18' Clear Height
- 34'4" suite width
- 125' Building Depth
- Two (2) Dock Doors
- Sprinklered Building

Owned by

INDUSTRIAL
PROPERTY TRUST®



industrialpropertytrust.com

Leased by



SEEFRIED
INDUSTRIAL PROPERTIES

Doug Smith

678.904.1919 Direct

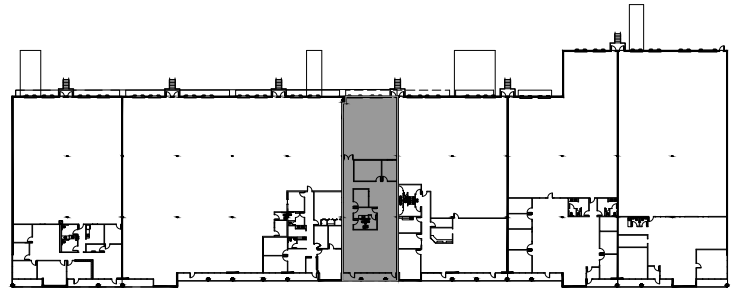
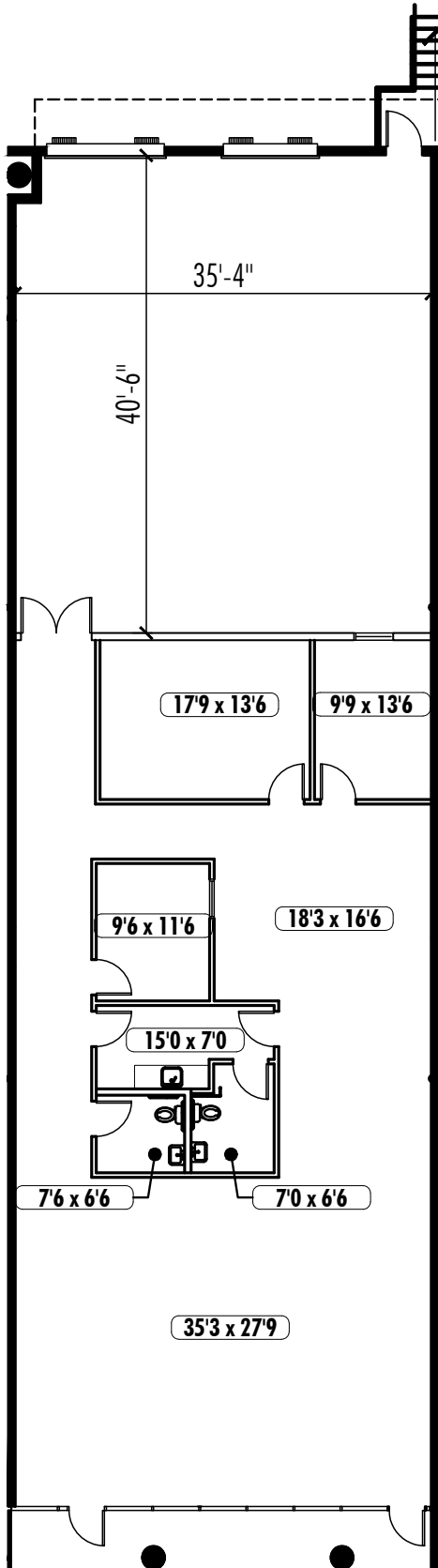
dougs@seefriedproperties.com

Joseph Kriss

678.904.1910

josephk@seefriedproperties.com

SOUTHFIELD INDUSTRIAL CENTER I 114 SOUTHFIELD PARKWAY, SUITE 120
4,320 SF AVAILABLE FOR LEASE



KEY PLAN