

3230/3250 Peachtree Corners Circle & 6670 Corners Industrial Court

Corners West Business Park

Norcross, GA 30092



SEEFRIED PROPERTIES, INC.

3333 Riverwood Parkway, Suite 200

Atlanta, GA 30339

404.233.0204

www.seefriedproperties.com

Doug Smith

678.904.1919 Direct

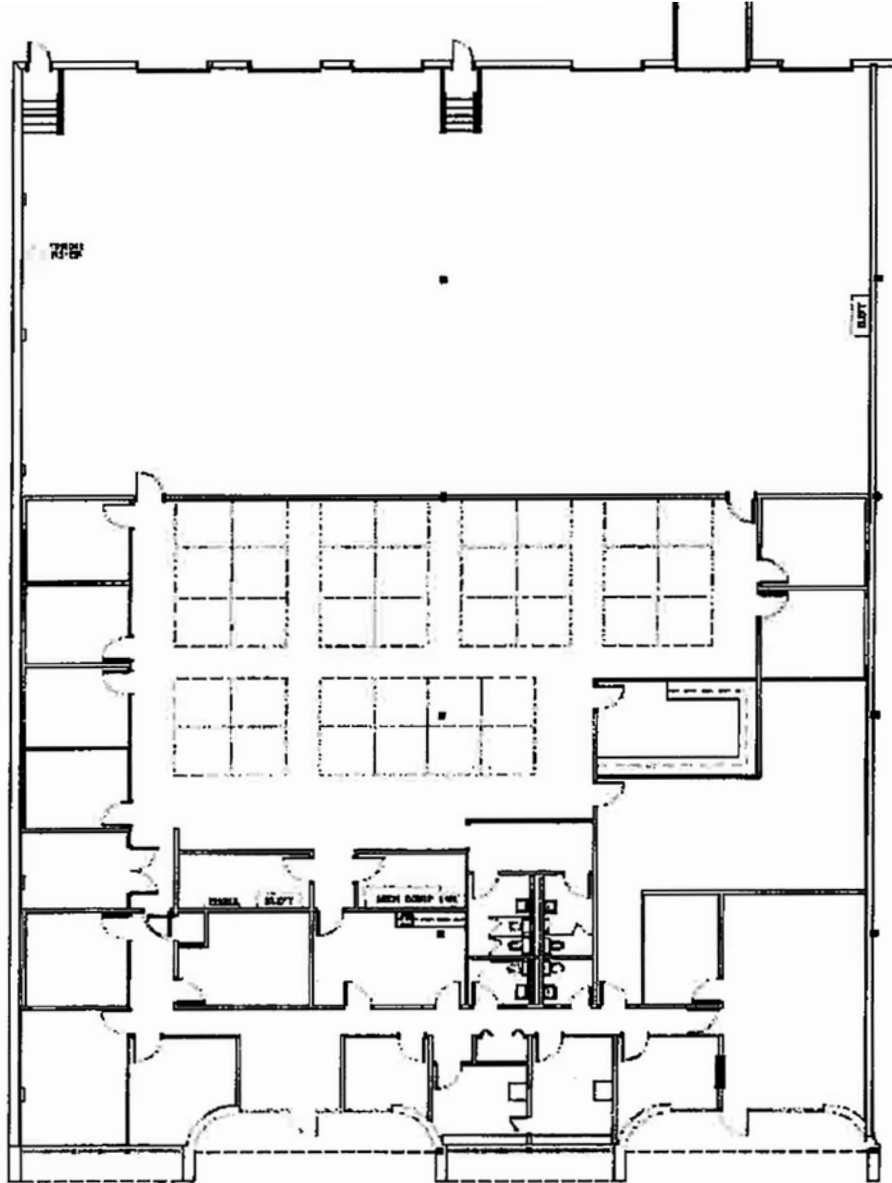
dougs@seefriedproperties.com

Joseph Kriss

678.904.1910 Direct

josephk@seefriedproperties.com

3250 Peachtree Corners Circle Suite A & B — 13,918 Available



Features

Property Type:	Flex
Total Building Size:	45,488 SF
Available Size:	13,918 SF
Office:	8,000 SF
Loading Doors:	5 dock-high; 1 drive-in
Clear Height:	18'
Sprinkler:	Wet System
Lighting:	T5

No guarantee, warranty or representation, express or implied, is made as to the accuracy of the information contained herein, and same is submitted subject to errors, omissions, change of price, rental or other conditions, or withdrawal without notice.



SEEFRIED PROPERTIES, INC.

3333 Riverwood Parkway, Suite 200

Atlanta, GA 30339

404.233.0204

www.seefriedproperties.com

Doug Smith

678.904.1919 Direct

dougs@seefriedproperties.com

Joseph Kriss

678.904.1910 Direct

josephhk@seefriedproperties.com