

AVAILABLE FOR LEASE

Woodlands at Riverside

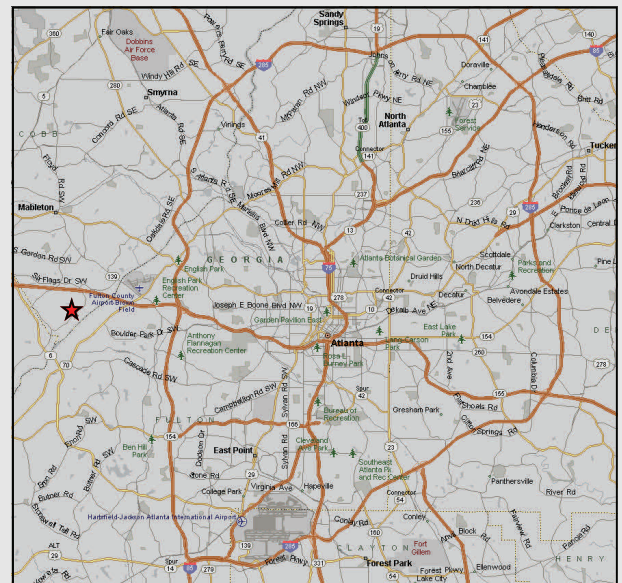
8110 Troon Circle, Suite 170, Austell, GA 30168



Building Specifications:

Space Available:	14,540 SF
Office Size:	Approximately 3,000 SF
Ceiling Height:	24' Clear Average
Dock Doors:	4 (9' x 10')
Drive-in Loading:	1 Concrete Ramp Door
Warehouse HVAC:	Climate Controlled
Sprinkler:	ESFR
Column Spacing:	40' x 45'

Excellent location with easy access to I-20 via Riverside Pkwy.



LEASED & MANAGED BY:



SEEFRIED INDUSTRIAL PROPERTIES, INC.

Doug Smith
(678) 904-1919

dougs@seefriedproperties.com

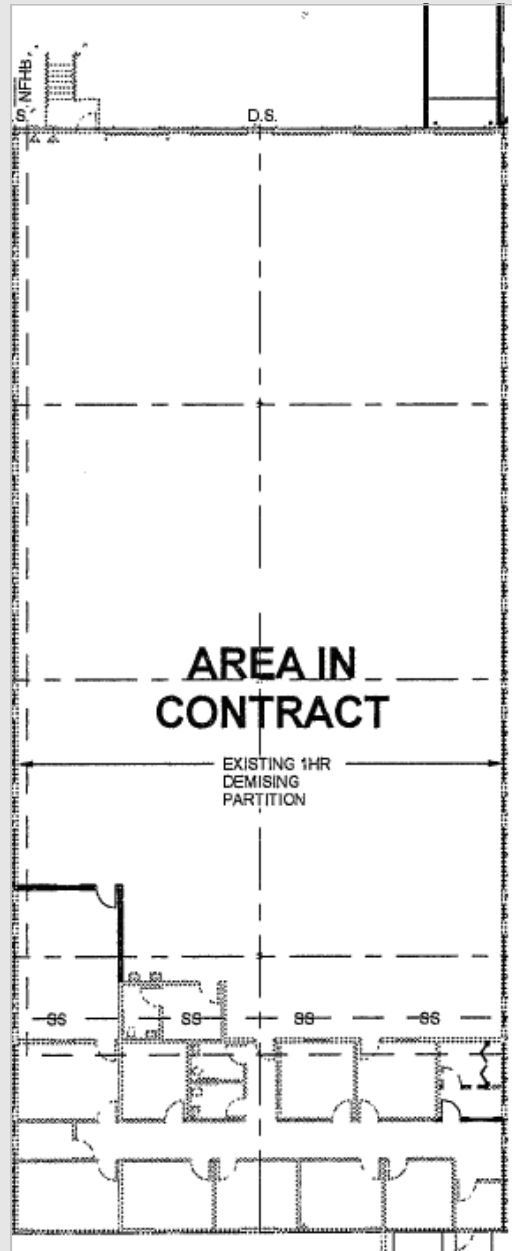
Joseph Kriss
(678) 904-19104

josephk@seefriedproperties.com

AVAILABLE FOR LEASE

Woodlands at Riverside

8110 Troon Circle, Suite 170, Austell, GA 30168



LEASED & MANAGED BY:



SEEFRIED INDUSTRIAL PROPERTIES, INC.

Doug Smith
(678) 904-1919

dougs@seefriedproperties.com

Joseph Kriss
(678) 904-19104

josephk@seefriedproperties.com