

AVAILABLE FOR LEASE

Gwinnett Park

4487/4497 Park Drive, Norcross, GA 30093 – Suite A

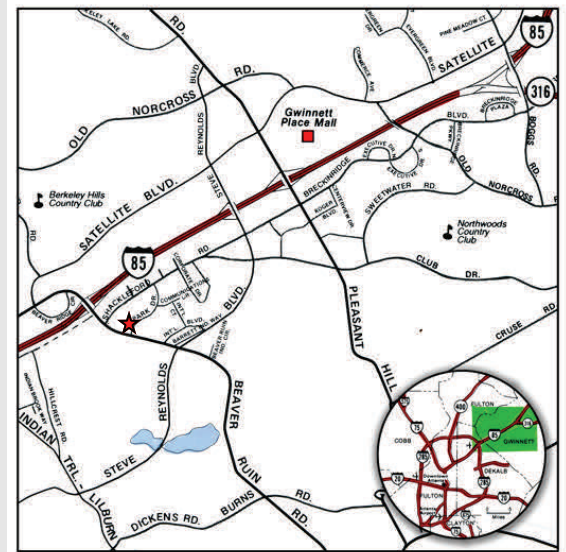


Building Specifications:

Space Available: 13,195 SF Office
Total Building: 93,591 SF
Sprinkler: Wet System

- END CAP UNIT
- VISIBLE FROM BEAVER RUIN
- AMPLE PARKING

*Excellent location with easy access to I-85 via
Beaver Ruin Road.*



OWNED BY:



LEASED & MANAGED BY:



SEEFRIED INDUSTRIAL PROPERTIES, INC.

Doug Smith
(678) 904-1919

dougs@seefriedproperties.com

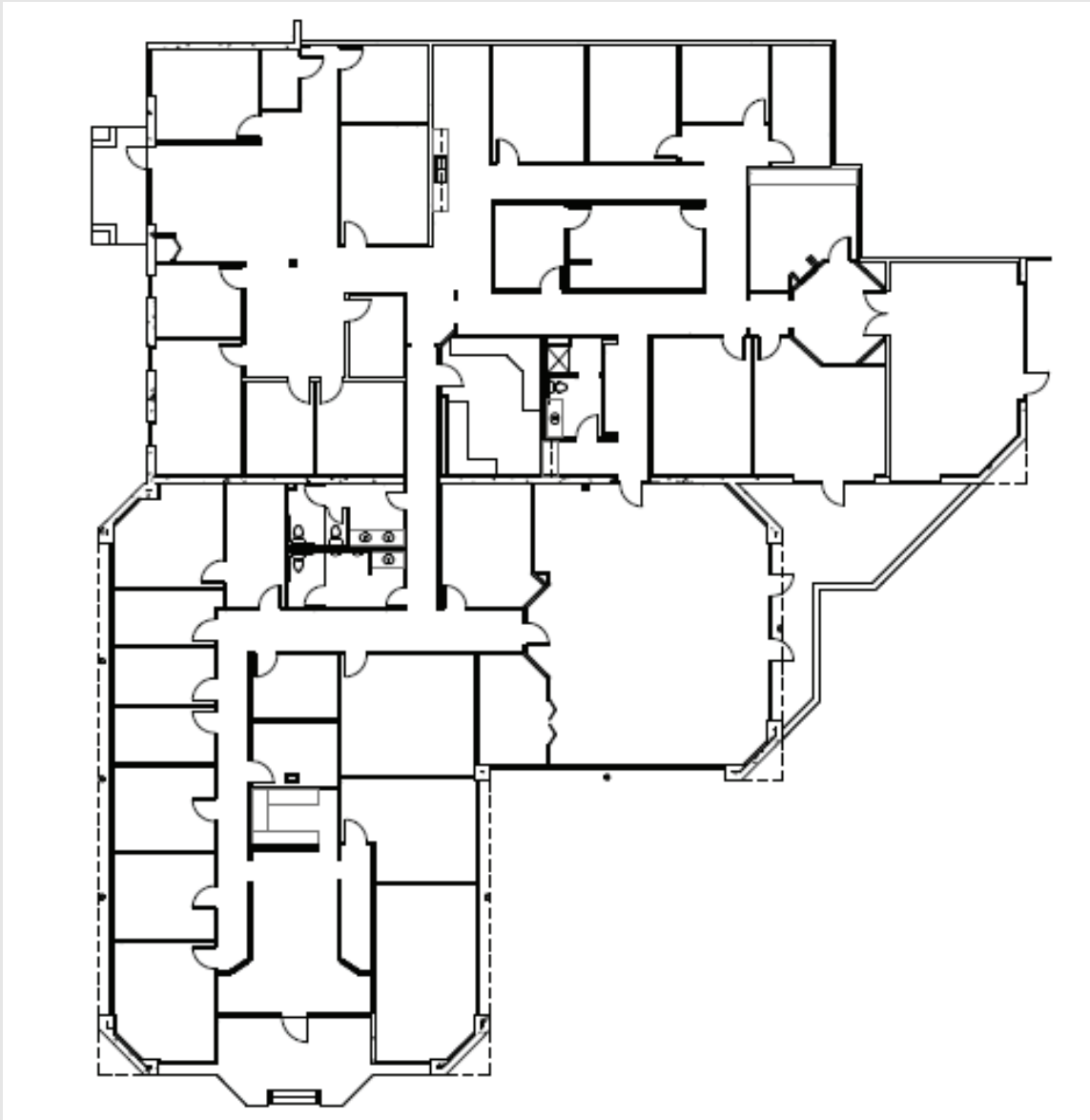
Joseph Kriss
(678) 904-1910

josephk@seefriedproperties.com

AVAILABLE FOR LEASE

Gwinnett Park

4487/4497 Park Drive, Norcross, GA 30093 – Suite A



OWNED BY:



LEASED & MANAGED BY:



SEEFRIED INDUSTRIAL PROPERTIES, INC.

Doug Smith
(678) 904-1919

dougs@seefriedproperties.com

Joseph Kriss
(678) 904-1910

josephk@seefriedproperties.com