

AVAILABLE FOR LEASE

Gwinnett Park

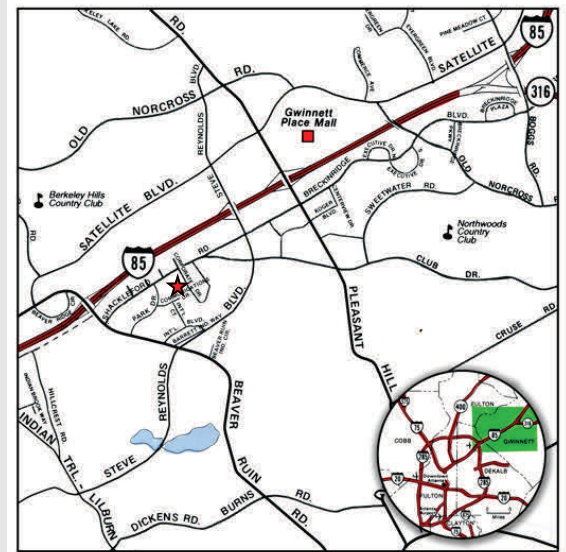
4487 Park Drive, Suite E, Norcross, GA 30093



Building Specifications:

Space Available:	13,014 SF
Office Size:	Approximately 3,000 SF
Ceiling Height:	22' Clear Average
Dock Doors:	3 Dock Doors
Sprinkler:	Wet System
Column Spacing:	40' x 30'

*Excellent location with easy access to I-85 via
Beaver Ruin Road.*



OWNED BY:



LEASED & MANAGED BY:



SEEFRIED INDUSTRIAL PROPERTIES, INC.

Doug Smith
(678) 904-1919

dougs@seefriedproperties.com

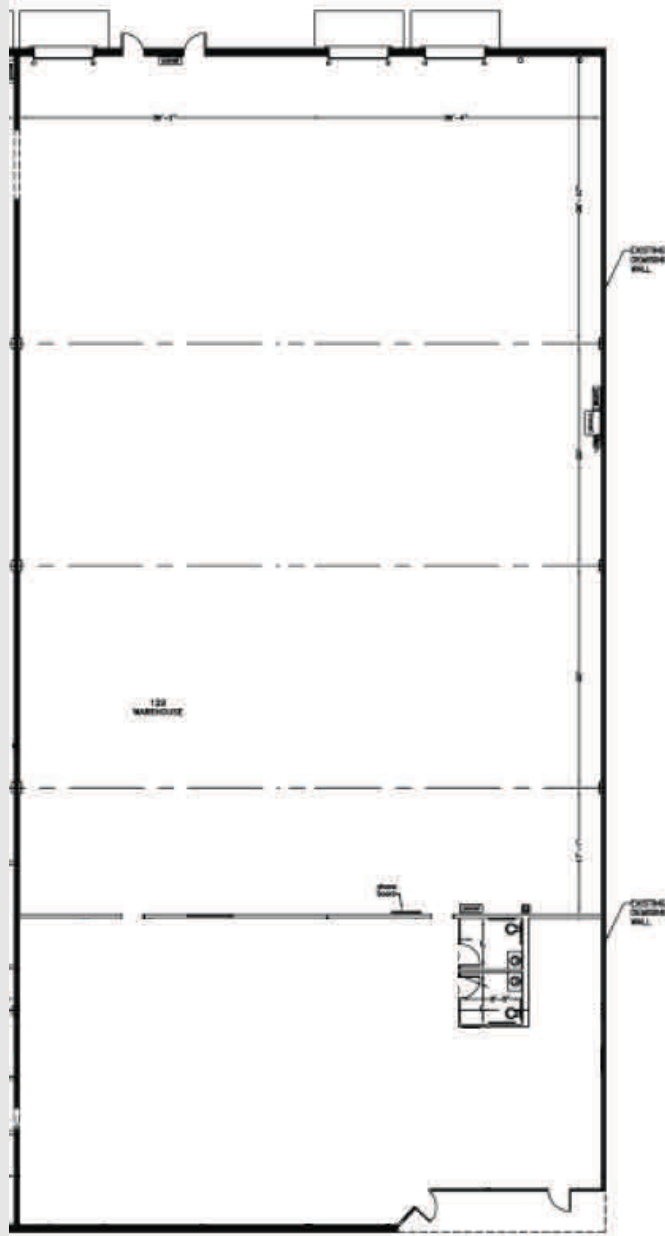
Joseph Kriss
(678) 904-1910

josephk@seefriedproperties.com

AVAILABLE FOR LEASE

Gwinnett Park

4487 Park Drive, Suite G, Norcross, GA 30093



OWNED BY:



LEASED & MANAGED BY:



SEEFRIED INDUSTRIAL PROPERTIES, INC.

Doug Smith
(678) 904-1919

dougs@seefriedproperties.com

Joseph Kriss
(678) 904-1910

josephk@seefriedproperties.com