

AVAILABLE FOR LEASE

Gwinnett Park

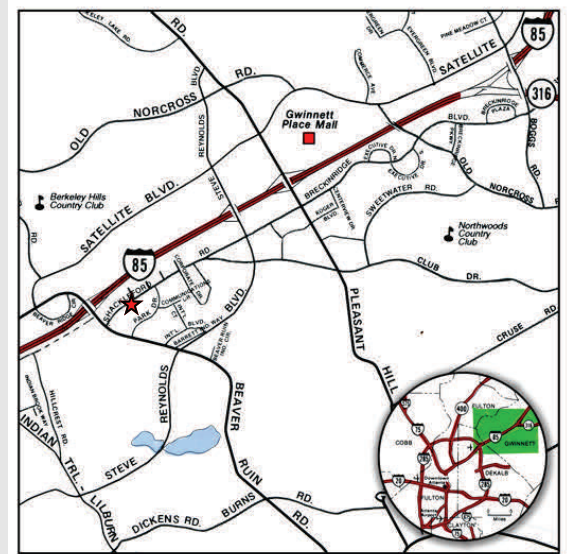
4487 Park Drive, Suite G, Norcross, GA 30093



Building Specifications:

Space Available:	6,566 SF
Office:	900 SF Approx.
Ceiling Height:	22' Clear
Dock Doors:	1 Dock Door
Drive-In Door:	1 10'x12' Ramped
Sprinkler:	Wet System
Column Spacing:	40' x 30'

Excellent location with easy access to I-85 via Beaver Ruin Road.



OWNED BY:



LEASED & MANAGED BY:



SEEFRIED INDUSTRIAL PROPERTIES, INC.

Doug Smith
(678) 904-1919

dougs@seefriedproperties.com

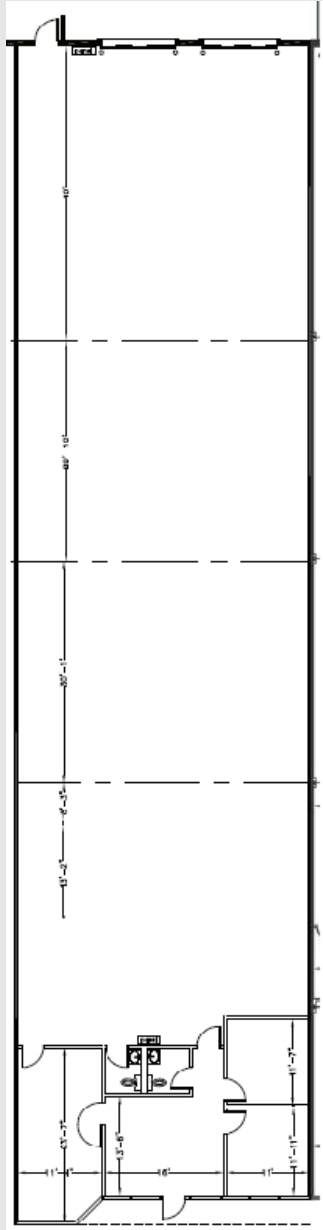
Joseph Kriss
(678) 904-1910

josephk@seefriedproperties.com

AVAILABLE FOR LEASE

Gwinnett Park

4487 Park Drive, Suite G, Norcross, GA 30093



OWNED BY:



LEASED & MANAGED BY:



SEEFRIED INDUSTRIAL PROPERTIES, INC.

Doug Smith
(678) 904-1919

dougs@seefriedproperties.com

Joseph Kriss
(678) 904-1910

josephk@seefriedproperties.com