

AVAILABLE FOR LEASE

Gwinnett Park

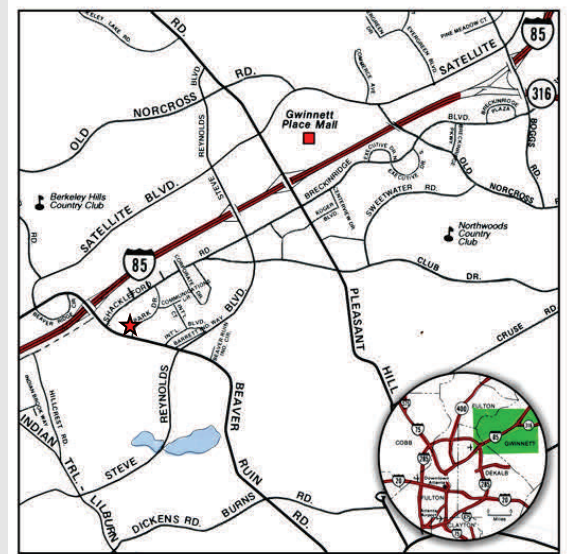
4467 Park Drive, Norcross, GA 30093 – Suite A



Building Specifications:

Space Available:	23,379 SF
Office:	4,365 SF
Ceiling Height:	20' Clear
Dock Doors:	6 Dock Doors
Drive-in Doors:	1 Concrete Ramp
Sprinkler:	Wet System
Column Spacing:	30' x 40'

Excellent location with easy access to I-85 via Beaver Ruin Road.



OWNED BY:



LEASED & MANAGED BY:



SEEFRIED INDUSTRIAL PROPERTIES, INC.

Doug Smith
(678) 904-1919

dougs@seefriedproperties.com

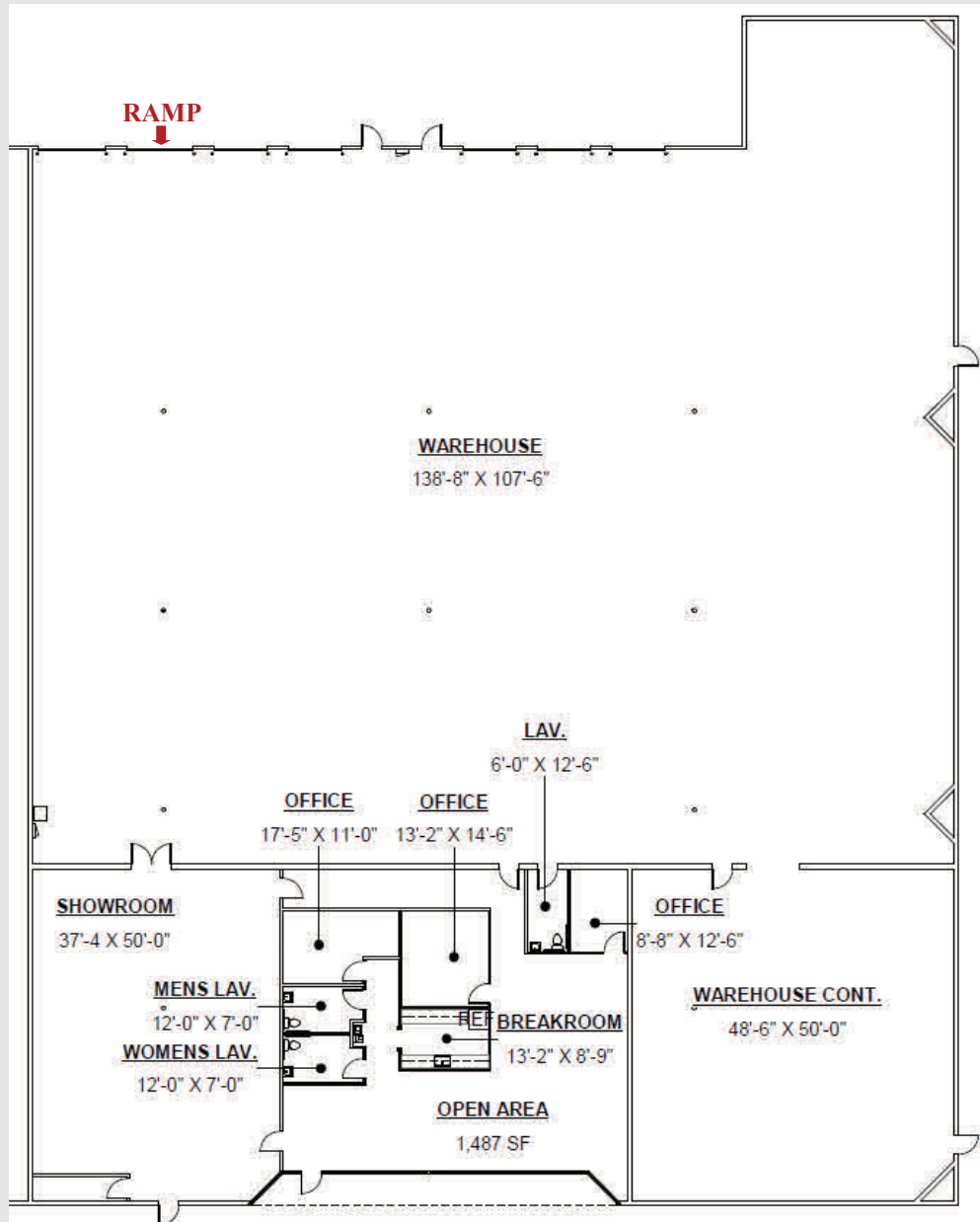
Joseph Kriss
(678) 904-1910

josephk@seefriedproperties.com

AVAILABLE FOR LEASE

Gwinnett Park

4467 Park Drive, Norcross, GA 30093 – Suite A



OWNED BY:



LEASED & MANAGED BY:



SEEFRIED INDUSTRIAL PROPERTIES, INC.

Doug Smith

(678) 904-1919

dougs@seefriedproperties.com

Joseph Kriss

(678) 904-1910

josephk@seefriedproperties.com