

AVAILABLE FOR LEASE

# Gwinnett Park

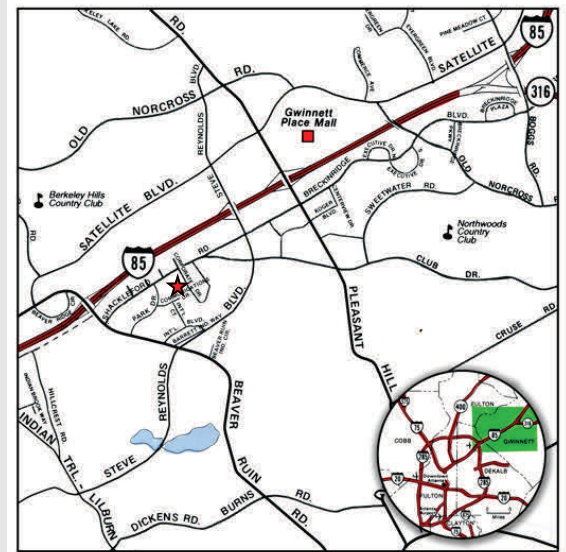
4357 Park Drive, Suite J, Norcross, GA 30093



## Building Specifications:

- Space Available:** 8,000 SF
- Office Size:** Approximately 5,000 SF
- Ceiling Height:** 20' Clear Average
- Dock Doors:** 2 Dock Doors
- Sprinkler:** Wet System
- Column Spacing:** 40' x 30'

*Excellent location with easy access to I-85 via Beaver Ruin Road.*



OWNED BY:



LEASED & MANAGED BY:



SEEFRIED INDUSTRIAL PROPERTIES, INC.

**Doug Smith**  
(678) 904-1919

[dougs@seefriedproperties.com](mailto:dougs@seefriedproperties.com)

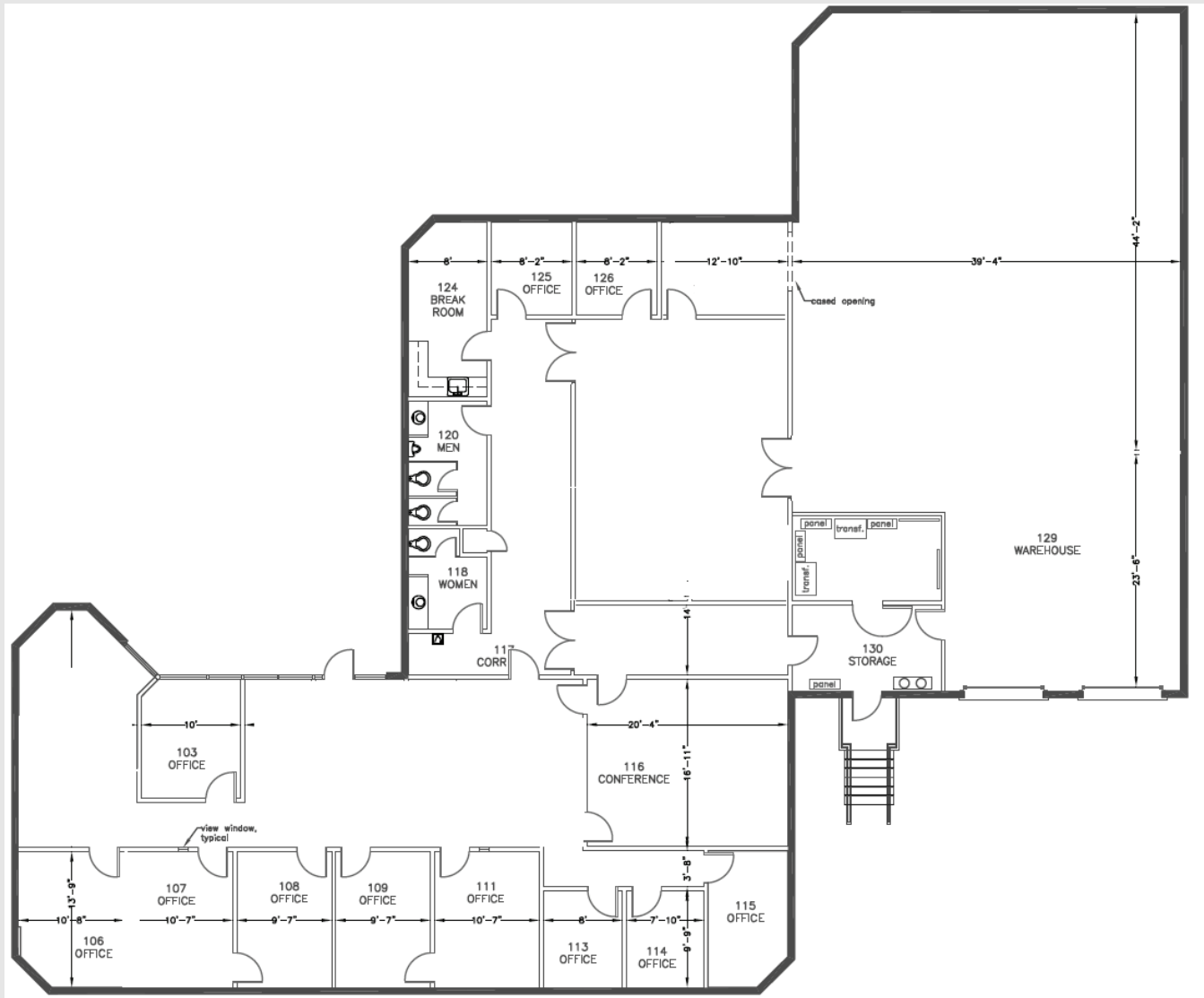
**Joseph Kriss**  
(678) 904-1910

[josephk@seefriedproperties.com](mailto:josephk@seefriedproperties.com)

AVAILABLE FOR LEASE

# Gwinnett Park

4357 Park Drive, Suite J, Norcross, GA 30093



OWNED BY:



LEASED & MANAGED BY:



SEEFRIED INDUSTRIAL PROPERTIES, INC.

**Doug Smith**  
(678) 904-1919

[dougs@seefriedproperties.com](mailto:dougs@seefriedproperties.com)

**Joseph Kriss**  
(678) 904-1910

[josephk@seefriedproperties.com](mailto:josephk@seefriedproperties.com)