

AVAILABLE FOR LEASE

# Gwinnett Park

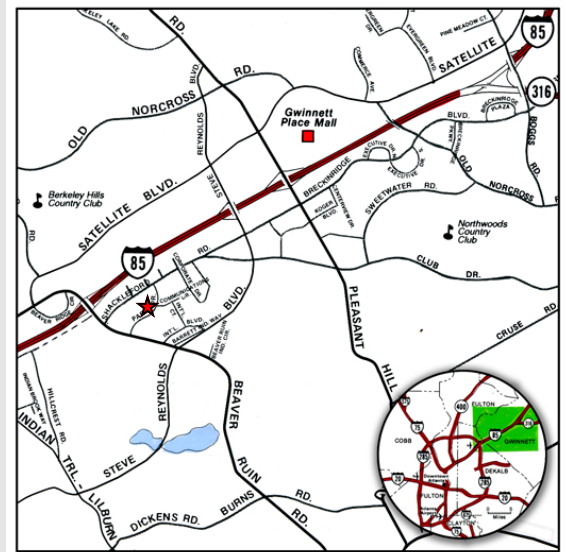
4357 Park Drive, Norcross, GA 30093 – Suite G



## Building Specifications:

- Space Available: 6,400 SF
- Office: 4,000 SF – Approx.
- Ceiling Height: 20' Clear
- Dock Doors: 2 Dock Doors
- Sprinkler: Wet System
- Column Spacing: 40' x 30'

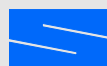
*Excellent location with easy access to I-85 via Beaver Ruin Road.*



OWNED BY:



LEASED & MANAGED BY:



**SEEFRIED INDUSTRIAL PROPERTIES, INC.**

**Doug Smith**  
(678) 904-1919

dougs@seefriedproperties.com

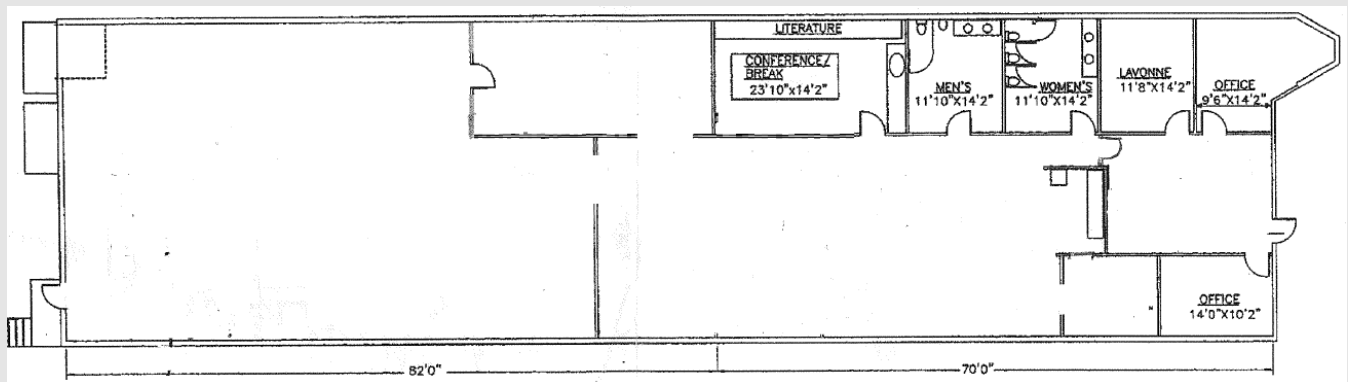
**Joseph Kriss**  
(678) 904-1910

josephk@seefriedproperties.com

AVAILABLE FOR LEASE

# Gwinnett Park

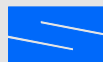
4357 Park Drive, Norcross, GA 30093 – Suite G



OWNED BY:



LEASED & MANAGED BY:



**SEEFRIED INDUSTRIAL PROPERTIES, INC.**

**Doug Smith**  
(678) 904-1919

[dougs@seefriedproperties.com](mailto:dougs@seefriedproperties.com)

**Joseph Kriss**  
(678) 904-1910

[josephk@seefriedproperties.com](mailto:josephk@seefriedproperties.com)