

AVAILABLE FOR LEASE

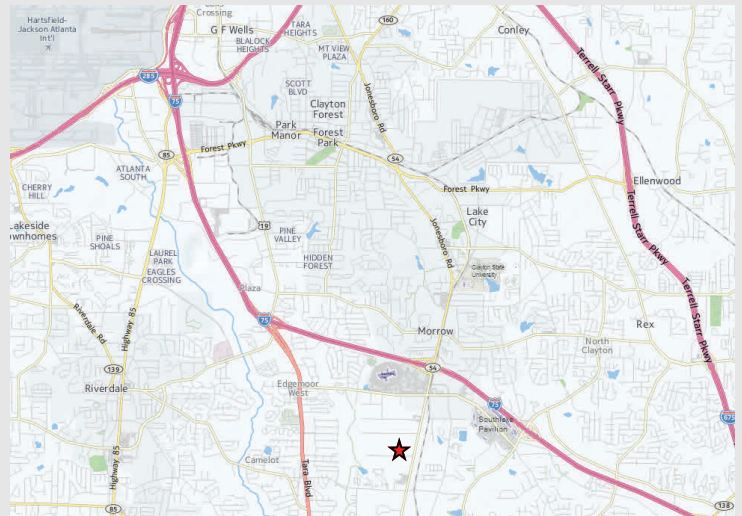
# Atlanta Southern Business Park

1286 Citizens Parkway, Suite B/C, Morrow GA



## Building Specifications:

- Space Available: 6,880 SF
- Office: Approx. 1,000 SF
- Ceiling Height: 20' Clear
- Dock Doors: 4 docks
- Column Spacing: 40' x 43'



*Excellent location with easy access to I-75 via Jonesboro Road.*

LEASED BY:



SEEFRIED INDUSTRIAL PROPERTIES, INC.

**Doug Smith**  
(678) 904-1919

[dougs@seefriedproperties.com](mailto:dougs@seefriedproperties.com)

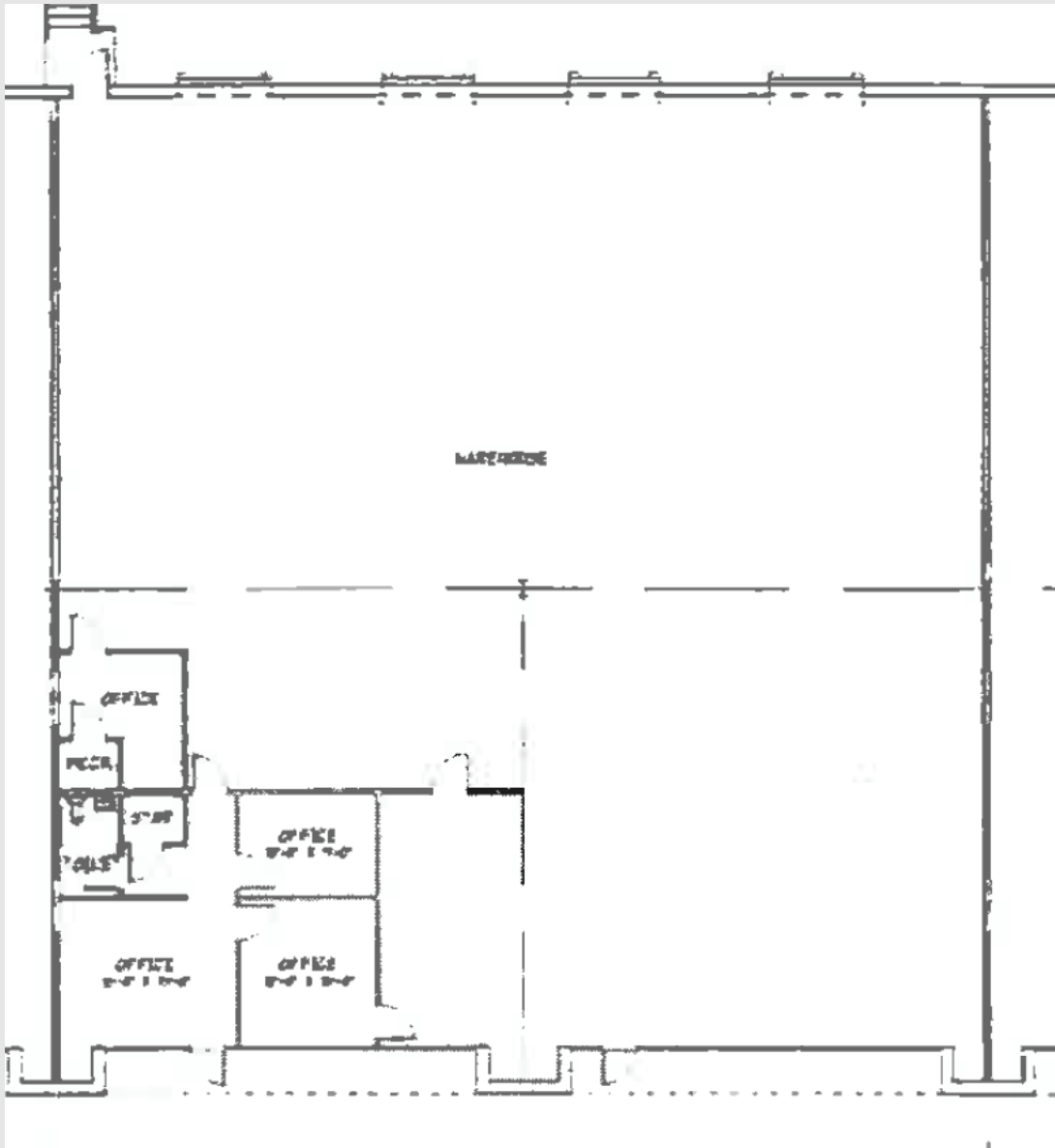
**Joseph Kriss**  
(678) 904-1910

[josephk@seefriedproperties.com](mailto:josephk@seefriedproperties.com)

AVAILABLE FOR LEASE

# Atlanta Southern Business Park

1286 Citizens Parkway, Suite B/C, Morrow GA



LEASED BY:



SEEFRIED INDUSTRIAL PROPERTIES, INC.

**Doug Smith**  
(678) 904-1919

[dougs@seefriedproperties.com](mailto:dougs@seefriedproperties.com)

**Joseph Kriss**  
(678) 904-1910

[josephk@seefriedproperties.com](mailto:josephk@seefriedproperties.com)